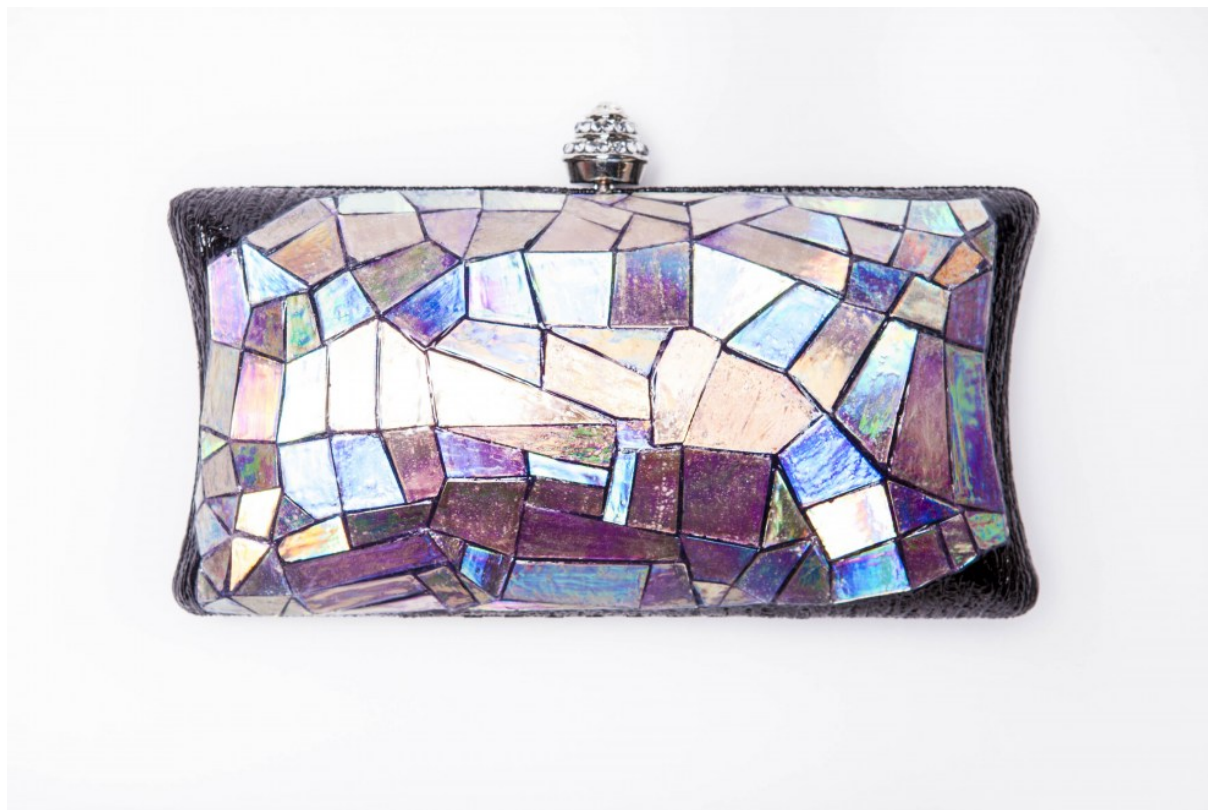


**Retro CD**





Handmade Wearable Art Clutch.

**Rating:** Not Rated Yet

[Ask a question about this product](#)

Manufacturer [Mercedes Brunelli](#)

## Description

- Handmade Embellishments
- Handmade in America
- Fits a Smart Phone
- Measures 3 3/4" H x 2" W x 7 1/2" L Opens 4"
- All clutches include two removable metal chains. Crossbody: 54" Shoulder: 15"
- All items ship with travel dust bag and decorative logo dust bag.

## Reviews

There are yet no reviews for this product.